





VOLVO 1800 S

a civilized touring car



As Road and Track Magazine Put It, "The Volvo 1800 S is a very civilized touring car for people who want to travel rapidly in style."

A Grand Turismo automobile is a car in which one can travel long distances in comfort. Comfort is two things. First it's the fully adjustable seats constructed to give support where it is most needed—under the legs, in the small of the back, and around the shoulders. It also means ending a long day's drive without the "whipped" feeling that you get from many cars. It is "feeling" comfortable as well as "being" comfortable. There is upholstery—top grain leather where leather should be and smooth vinyl on other surfaces. Made to measure carpets cover the floor. A map light is located under the dash.



OCCASIONAL SEATING ON THE SEATS IN THE REAR



ALSO A SURPRISINGLY GENEROUS LUGGAGE SPACE

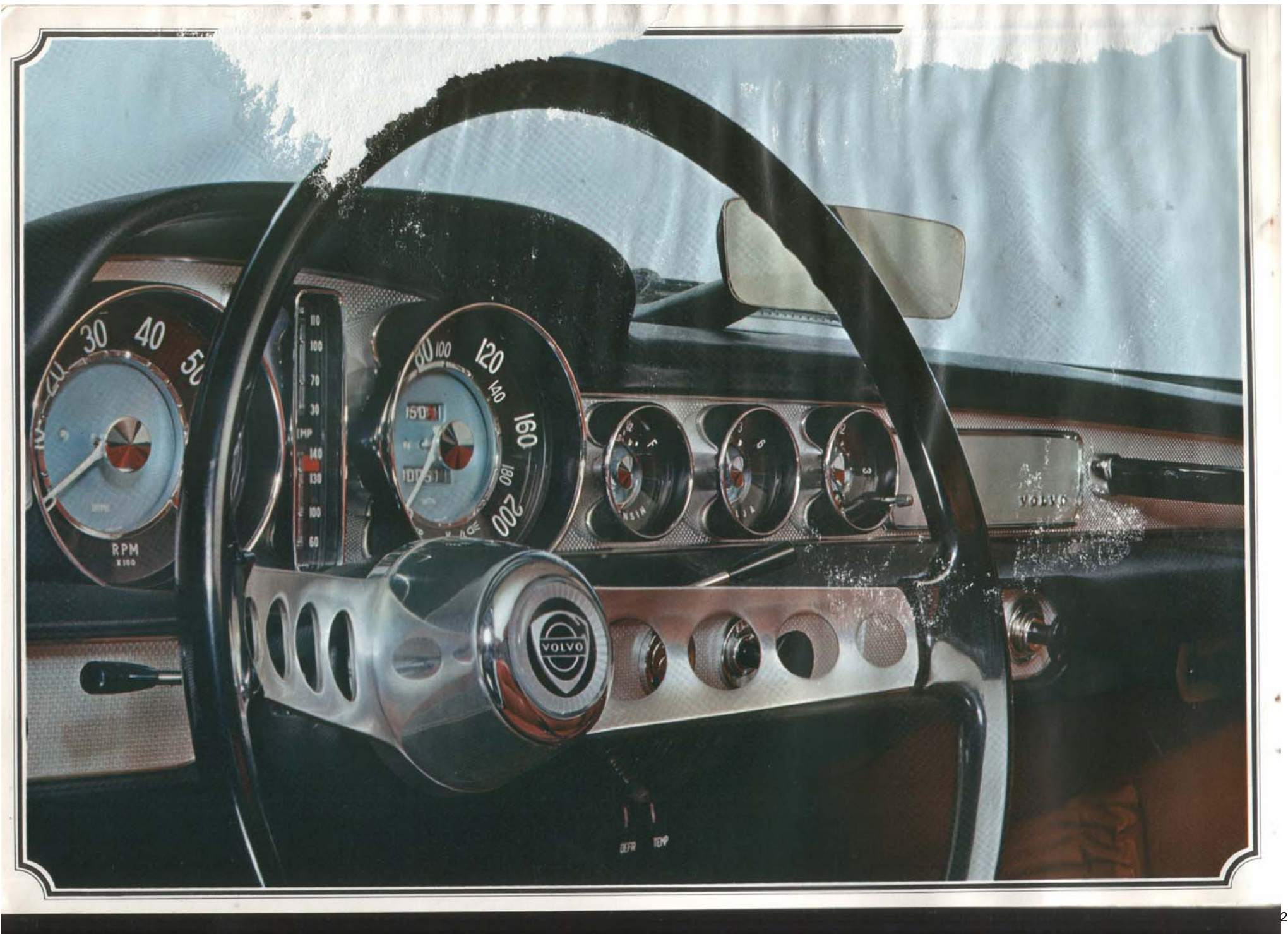
VOLVO 1800 S

for rapid
travel in style

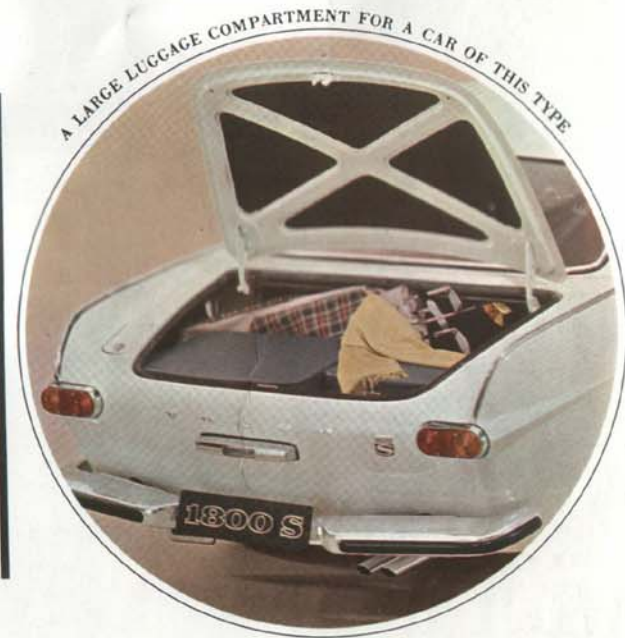
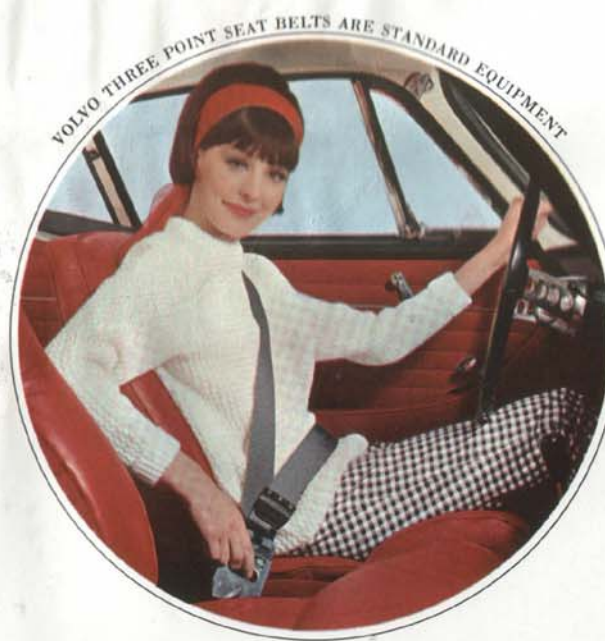








VOLVO 1800 S with complete equipment



There is a very comfortable feeling to sit in the driver's seat of a Volvo 1800 S. The steering wheel and controls are ideally located. Even with the Volvo three-point seat belt fastened, all the controls are easy to reach. The instrument panel is beautifully designed—every dial is clearly visible. Electrically operated two-speed windshield wipers and washer are operated by one control only. There is a very high capacity heater and defroster system.

The high out-put 108 SAE horse-power Volvo engine is exceptionally efficient because of its twin carburetors, separate induction ports for each cylinder and fully machined combustion chambers. This engine lasts an exceptionally long time because of its greater tolerance to stresses: Contributing factors are a five bearing crankshaft, an oil cooler and a full flow oil filter. All gears in the four speed synchronized transmission are carried in needle bearings. An overdrive unit that can be engaged and disengaged by means of a column mounted lever, ensures fast but quiet driving at low engine speed; a great fuel economizer. In fact the Volvo 1800 S at seventy miles an hour uses no more gas than the largest selling imported economy Sedan.



SHORT GEAR LEVER / DAZZLE-FREE REAR VIEW MIRROR / EXHAUST THROUGH TWIN-END EXHAUST PIPES / BUMPER WITH RUBBER PROTECTION / LIGHT-METAL GRILLE / GRAB HANDLE

VOLVO 1800 S

with high
performance engine





specifications

Importers:

Volvo Inc.,
Volvo Drive, Rockleigh, New Jersey

Distributors:

Volvo Distributing Inc.,
Volvo Drive, Rockleigh, New Jersey

Swedish Motor Import, Inc.,
3303 West 12th Street, Houston 24, Texas

Volvo Western Distributing, Inc.,
1325 Riverside Drive, Sherman Oaks, Calif.



Type B 18 B engine

Four-cylinder with overhead valves and five-bearing crankshaft.

Bore 3.313"
Stroke 3.15"
Capacity 108.5 cu.in. (1.78 litres)
Compression ratio 10.0:1
Max. output 108 b.h.p. (SAE) at 5,800 r.p.m.

Max. torque 110 lb.ft. (15.2 kgm) (SAE) at 4,000 r.p.m.

Carburetors Twin horizontal carburetors
Oil filter Full-flow type
Oil cooler Heat exchanger
Oil/water

Cooling system

Circulation thermostatically controlled.
Oil cooler (see engine).

Battery

Voltage 12 V
Capacity 60 amp./hrs.

Generator

Output max. 360 W

Starter motor

Output 1 h.p.
Starter switch incorporated in ignition switch. Ignition switch and coil are joined by means of a tamper-proof armoured cable.

Clutch

Single dry clutch, hydraulically controlled.
Pressure plate with diaphragm spring.

Transmission

Fully synchronized and quiet running. Short floor-mounted gear lever.

Ratios: 1st gear 3.13:1
2nd gear 1.99:1
3rd gear 1.36:1
4th gear 1.00:1
Reverse 3.25:1

Overdrive

Electrically operated. Operates on fourth gear.
Ratio 0.756:1

Rear axle

Hypoid type final drive.
Ratio 4.56:1

Steering gear

Cam and roller type.
Number of steering wheel turns from left lock to right lock 3 1/4
Turning circle approx. 33 ft.

Front wheel suspension

Independent suspension with rubber-mounted control arms and ball joints. Coil springs and stabilizer.

Rear wheel suspension

Rigid rear axle carried on two longitudinal rubber-mounted support arms and two longitudinal rubber-mounted torque arms. Transverse location of axle by means of a track rod. Coil springs.

Shock absorbers

Double-acting, hydraulic, telescopic shock absorbers at front and rear.

Footbrake

Hydraulic brakes with servo-assistance.
Front:
Disc brakes. Splash-protected and self-adjusting.
Rear:
Drum brakes of V-type. Self-centring.

Handbrake

Operates mechanically on the rear wheels. Handbrake lever located between driving seat and door.

Wheels and tires

Pressed steel wheels. All wheels balanced.
Rim size 4 1/2 J x 15"
Braced-tread type sports tires (with tubes)
Dimensions 165 mm-15"

Body

Integral, all-welded steel body, completely rust-protected in accordance with the most modern methods.

Fuel tank

Capacity 12 US galls.

Lighting equipment

Flasher type direction indicators front and rear. Stop and tail lights with built-in reflectors. Automatic back-up light. The interior lighting is switched on automatically when either of the doors is opened. Adjustable instrument lighting. Map-reading lamp.

Instrumentation

Speedometer with odometer and trip meter. Tachometer. Water and oil temperature gauges. Oil pressure gauge. Fuel gauge. Control lamps for battery charging. Main beams, direction indicator flashers and overdrive. Clock.

Other equipment

Foot dimmer switch. Directional indicator lever with automatic return. Fresh-air heater and defroster. Heating thermostatically controlled. Two-speed ventilation fan. Separate air intakes for ventilation in hot weather. Two-speed electric windshield wipers. Electric windshield washer. Two padded sun visors. Dazzle-free rearview mirror. Accommodation for radio. Map and glove pockets under dash. Grab handle on dash. Cigarette lighter. Ashtray. Tool equipment and jack. Spare wheel. Mudflaps.

Seat belts

Three-point seat belts fitted for both seats.

Main dimensions and weight

Wheelbase	96 1/2"
Track, front	51 3/4"
Track, rear	51 3/4"
Overall length	173 1/4"
Overall width	67"
Overall height, unladen	50 1/2"
Ground clearance	approx. 6"
Kerb weight	approx. 2,470 lb.

The factory reserves the right to alter the price, design and equipment without previous notification.

