



Utgåva  
**2**  
Issue

Grupp  
**2d**  
Group  
Sida  
**1**  
Page

**GRUPP 2d  
Motorreglage**

INNEHÅLLSFÖRTECKNING

	Sida	Koord
Gasreglage B20B .....	2	1-E3
Gasreglage B20E-F .....	4a	1-E5
Chokereglage B20B .....	6	1-E9

**GRUPPE 2d  
Motorregler**

INHALTSVERZEICHNIS

	Seite	Grid
Gasregler B20B .....	2	1-E3
Gasregler B20E-F .....	4a	1-E5
Kaltstartvorrichtung B20B .....	6	1-E9

**GROUP 2d  
Engine control linkages**

INDEX

	Page	Grid
Throttle linkage B20B .....	2	1-E3
Throttle linkage B20E-F .....	4a	1-E5
Choke linkage B20B .....	6	1-E9

**GRUPO 2d  
Mandos del motor**

INDICE

	Pág	Grid
Mando del acelerador B20B .....	2	1-E3
Mando del acelerador B20E-F .....	4a	1-E5
Mando del estrangulador B20B .....	6	1-E9

**GROUPE 2d  
Commandes du moteur**

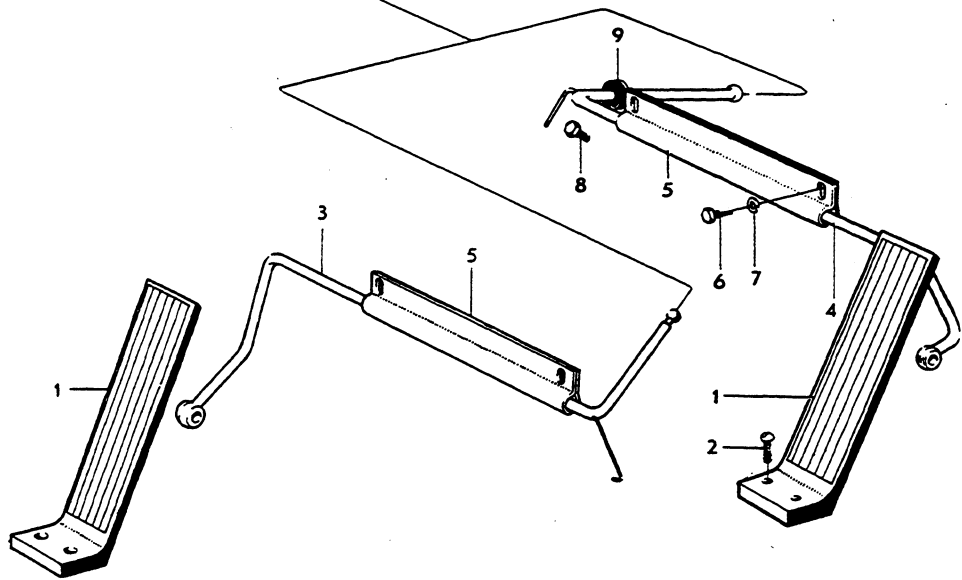
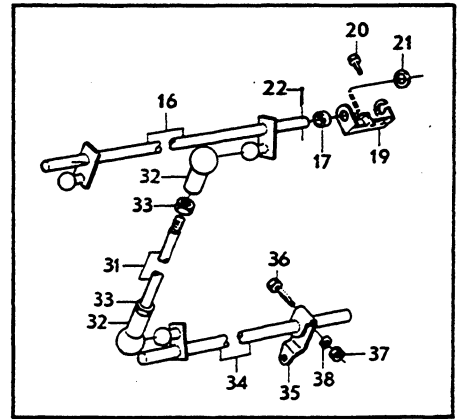
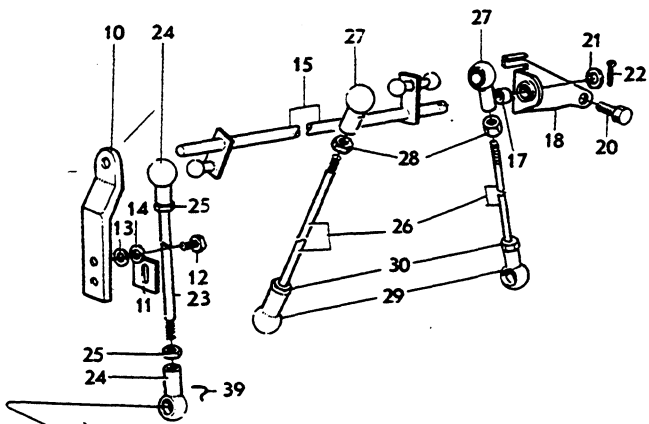
TABLE DES MATIERES

	Page	Grid
Commande d'accélérateur B20B .....	2	1-E3
Commande d'accélérateur B20E-F .....	4a	1-E5
Commande de starter B20B .....	6	1-E9



Sida	Grupp	Gasreglage	Throttle linkage	Illustration Utgåva
2	2d	B20B	B20B	2
Page	Group			7562 Issue

Pos. Fig.	Antal/Quantity				Detalj nr Part No	Benämning	Description	Sats Kit	Anmärkning Notes	
	VST	HST								
1	1	1	-	-	661996-9	Gaspedal .....	Accelerator pedal .....	3		010
2	2	2	-	-	955141-7	Skruv .....	Screw .....	0		020
3	1	-	-	-	667232-3	Axel .....	Shaft .....	4		030
4	-	1	-	-	666543-4	Axel .....	Shaft .....	4		040
5	1	1	-	-	662734-3	Lager .....	Bearing .....	4		050
6	2	2	-	-	955636-6	Skruv .....	Screw .....	0		060
7	2	2	-	-	955920-4	Fjäderbricka .....	Spring washer .....	0		070
8	1	1	-	-	663422-4	Ställskruv .....	Set screw .....	0		080
9	1	1	-	-	663052-9	Gummitätning .....	Rubber seal .....	2		090
10	1	-	-	-	672010-6	Konsol .....	Bracket .....	3		100
	-	1	-	-	682098-9	Konsol .....	Bracket .....	3		110
11	1	1	-	-	666545-9	Justerbricka .....	Adjuster washer .....	0		120
12	2	2	-	-	955637-4	Skruv .....	Screw .....	0		130
13	2	2	-	-	955893-3	Bricka .....	Washer .....	0		140
14	2	2	-	-	955920-4	Fjäderbricka .....	Spring washer .....	0		150
15	1	-	-	-	673949-4	Axel .....	Shaft .....	3		160
16	-	1	-	-	683302-4	Axel .....	Shaft .....	3	(682097)	170
17	1	1	-	-	666143-3	Bussning .....	Bushing .....	1		180
18	1	-	-	-	673945-2	Konsol .....	Bracket .....	3		190
19	-	1	-	-	419570-7	Konsol .....	Bracket .....	3		200
20	2	2	-	-	950045-5	Skruv .....	Screw .....	0		210
21	1	1	-	-	960147-7	Bricka .....	Washer .....	0	(192369)	220
22	1	1	-	-	907824-7	Saxpinne .....	Split pin .....	0		230
23	1	1	-	-	942412-8	Reglerstång .....	Control rod .....	3	182 CH-29754	240
	1	1	-	-	943548-8	Reglerstång .....	Control rod .....	3	182 CH 29755-. 183	250
24	2	2	-	-	959088-6	Kulskål .....	Ball shell .....	1	182 CH-29754	260
	1	1	-	-	959088-6	Kulskål .....	Ball shell .....	1	182 CH 29755-. 183	270
	1	1	-	-	942837-6	Kulskål .....	Ball shell .....	1	182 CH 29755-. 183	280
25	2	2	-	-	955780-2	Mutter .....	Nut .....	0	182 CH-29754	290
	1	1	-	-	955780-2	Mutter .....	Nut .....	0	182 CH 29755-. 183	300
	1	1	-	-	942836-8	Mutter .....	Nut .....	0	182 CH 29755-. 183	310
26	2	-	-	-	943315-2	Reglerstång .....	Control rod .....	3		320
27	2	-	-	-	959088-6	Kulskål .....	Ball shell .....	1		330
28	2	-	-	-	955780-2	Mutter .....	Nut .....	0		340
29	2	-	-	-	942837-6	Kulskål .....	Ball shell .....	1		350
30	2	-	-	-	942836-8	Mutter .....	Nut .....	0		360
31	-	1	-	-	942988-7	Reglerstång .....	Control rod .....	3		370
32	-	2	-	-	959088-6	Kulskål .....	Ball shell .....	1		380
33	-	2	-	-	955780-2	Mutter .....	Nut .....	0		390
34	-	1	-	-	419575-6	Mellanaxel .....	Intermediary shaft .....	3		400
35	-	1	-	-	668558-0	Hävarm,främre .....	Lever,forward .....	3		410
	-	1	-	-	668559-8	Hävarm,bakre .....	Lever,rear .....	3		420
36	-	2	-	-	106836-0	•Skruv .....	•Screw .....	0		430
37	-	2	-	-	237176-3	•Mutter .....	•Nut .....	3		440
38	-	2	-	-	237177-1	•Bricka .....	•Washer .....	3		450
39	6	4	-	-	959093-6	Bygel .....	Brace .....	11		460





Sida	Grupp				Gasreglage	Throttle linkage	Illustration	Utgåva		
Page	Group				B20E-F	B20E-F		3		
Pos.	Antal/Quantity				Detalj nr	Benämning	Description	Sats	Anmärkning	
Fig.	VST	HST			Part No		Kit	Notes		
1	1	1	—	—	661996-9	Gaspedal .....	Accelerator pedal .....	3		010
2	2	2	—	—	955141-7	Skruv .....	Screw .....	0		020
3	1	—	—	—	682912-1	Axel .....	Shaft .....	4		030
4	—	1	—	—	682913-9	Axel .....	Shaft .....	4		040
5	1	1	—	—	662734-3	Lager .....	Bearing .....	4		050
6	2	2	—	—	955512-9	Skruv .....	Screw .....	0		060
7	2	2	—	—	941906-0	Fjädrande bricka .....	Resilient washer .....	0		070
8	1	1	—	—	663422-4	Ställskruv .....	Set screw .....			080
9	1	1	—	—	682125-0	Konsol .....	Bracket .....	3	182 CH-32799	090
	1	1	—	—	684776-8	Konsol .....	Bracket .....	3	182 CH 32800- 183 CH-3069	100
10	1	1	—	—	940100-1	Skruv .....	Screw .....	0	182 CH-32799	120
	2	2	—	—	940100-1	Skruv .....	Screw .....	0	182 CH 32800- 183 CH-3069	130
11	1	1	—	—	941906-0	Fjädrande bricka .....	Resilient washer .....	0	182 CH-32799	150
	2	2	—	—	941906-0	Fjädrande bricka .....	Resilient washer .....	0	182 CH 32800- 183 CH-3069	160
12	1	1	—	—	306288-2	Plugg .....	Plug .....			180
13	1	1	—	—	682123-5	Konsol .....	Bracket .....	3	182 CH-35095	190
	1	1	—	—	460422-9	Konsol .....	Bracket .....	3	182 CH 35096- 183 CH-3069	200
14	3	3	—	—	950044-8	Skruv .....	Screw .....	0		210
15	1	1	—	—	682126-8	Kabel .....	Cable .....	2		220
16	2	2	—	—	677218-0	Bult .....	Bolt .....	2		230
17	1	1	—	—	682915-4	Excenterhjul .....	Excentric cam .....	3		240
18	1	1	—	—	460421-1	Hävarm .....	Lever .....	3	182 CH 35096- 183 CH-3069	250
19	1	1	—	—	418963-5	Fjäder .....	Spring .....	3	182 CH 35096- 183 CH-3069	260
20	1	1	—	—	460560-6	Fjäder .....	Spring .....	3	182 CH 35096- 183 CH-3069	270
21	1	1	—	—		Bricka .....	Washer .....	8	182 CH-33729	280
22	1	1	—	—	950363-2	Mutter .....	Nut .....	0		290
23	1	1	—	—	950023-2	Skruv .....	Screw .....	0		310
24	1	1	—	—	940092-0	Mutter .....	Nut .....	0		330
25	1	1	—	—	687419-2	Bricka .....	Washer .....	3	182 CH 32800- 183 CH-3069	340
26	1	1	—	—	941267-7	Propp .....	Plug .....	0	M41, M410	350
27	1	—	—	—	684751-1	Konsol .....	Bracket .....	3	BW35	360
28	1	—	—	—	684749-5	Hävarm .....	Lever .....	3	BW35	370
29	2	—	—	—	943865-6	Bricka .....	Washer .....	0	BW35	380
30	1	—	—	—	940213-2	Spärryttare .....	Circlip .....	0	BW35	390
31	1	—	—	—	943884-7	Gaffel .....	Yoke .....	3	BW35	400
32	1	—	—	—	677218-0	Bult .....	Bolt .....	2	BW35	410
33	1	—	—	—	191503-2	Reglerstång .....	Control rod .....	3	BW35	420
34	1	—	—	—	959088-6	Kulskål .....	Ball joint .....	1	BW35	430
35	1	—	—	—	955780-2	Mutter .....	Nut .....	0	BW35	440
36	1	—	—	—	959093-6	Bygel .....	Brace .....	1	BW35	450
37	1	—	—	—	1212147-1	Bälg .....	Bellows .....		BW35 (684585)	460
38	1	—	—	—	955894-1	Bricka .....	Washer .....	0	BW35	470
39	1	—	—	—	941906-0	Fjädrande bricka .....	Resilient washer .....	0	BW35. 182 CH 32891- 183 CH-3069	480
40	1	—	—	—	950372-3	Mutter .....	Nut .....	0	BW35 182 CH-32890	490
	1	—	—	—	955846-1	Mutter .....	Nut .....	0	BW35 182 CH 32891- 183 CH-3069	500
41	1	—	—	—	913094-9	Saxpinnebult .....	Clevis pin .....	0	BW35	510
42	1	—	—	—	955891-7	Bricka .....	Washer .....	0	BW35	520
43	1	—	—	—	907819-7	Saxpinne .....	Split pin .....	0	BW35	530
44	1	—	—	—		Reglagewajer .....	Cable .....		BW35. SE GRUPP 4	540

004

010

020

030

040

050

060

070

080

090

100

110

120

130

140

150

160

170

180

190

200

210

220

230

240

250

260

270

280

290

300

310

320

330

340

350

360

370

380

390

400

410

420

430

440

450

460

470

480

490

500

510

520

530

540

550

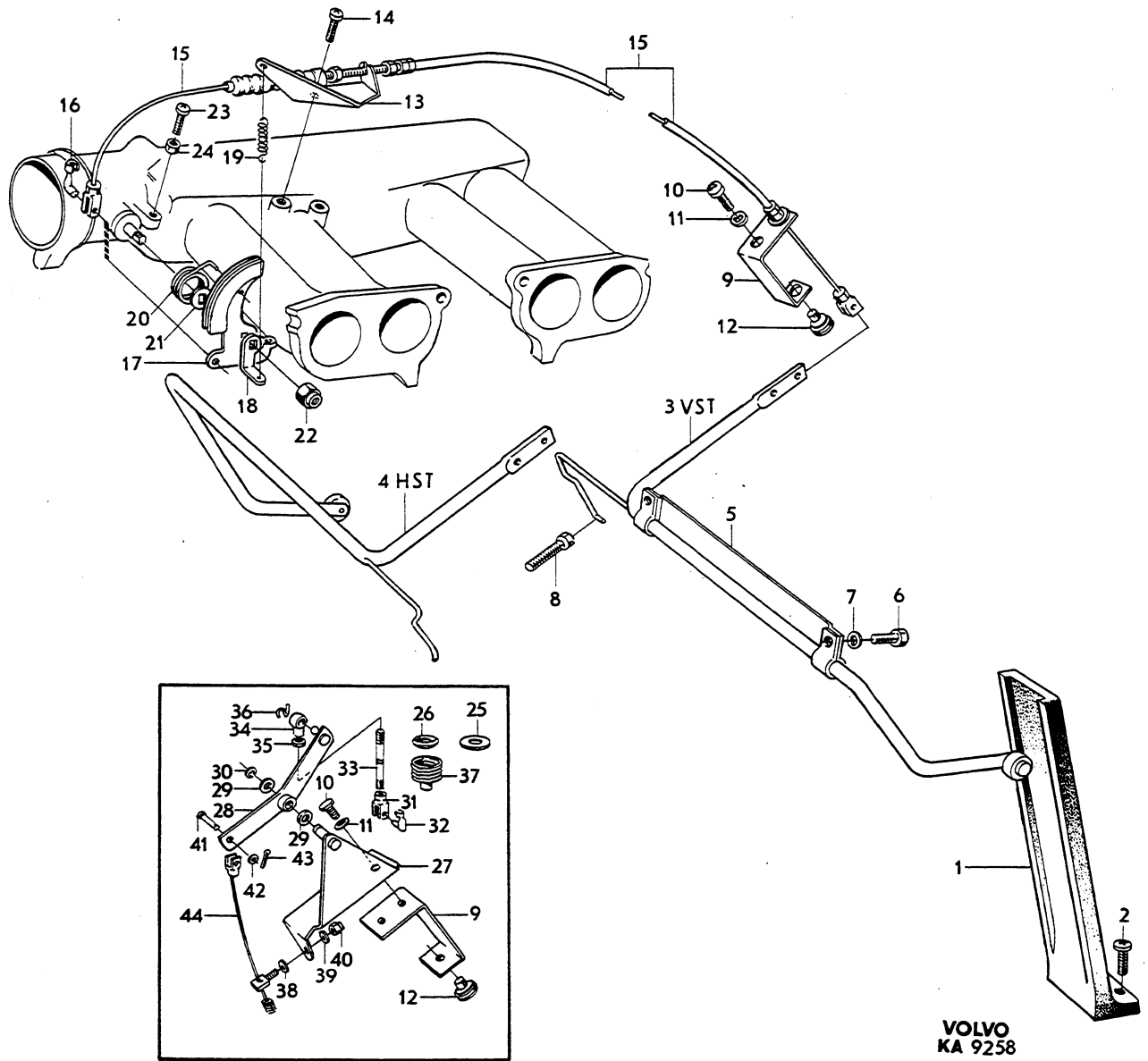
560

570

580

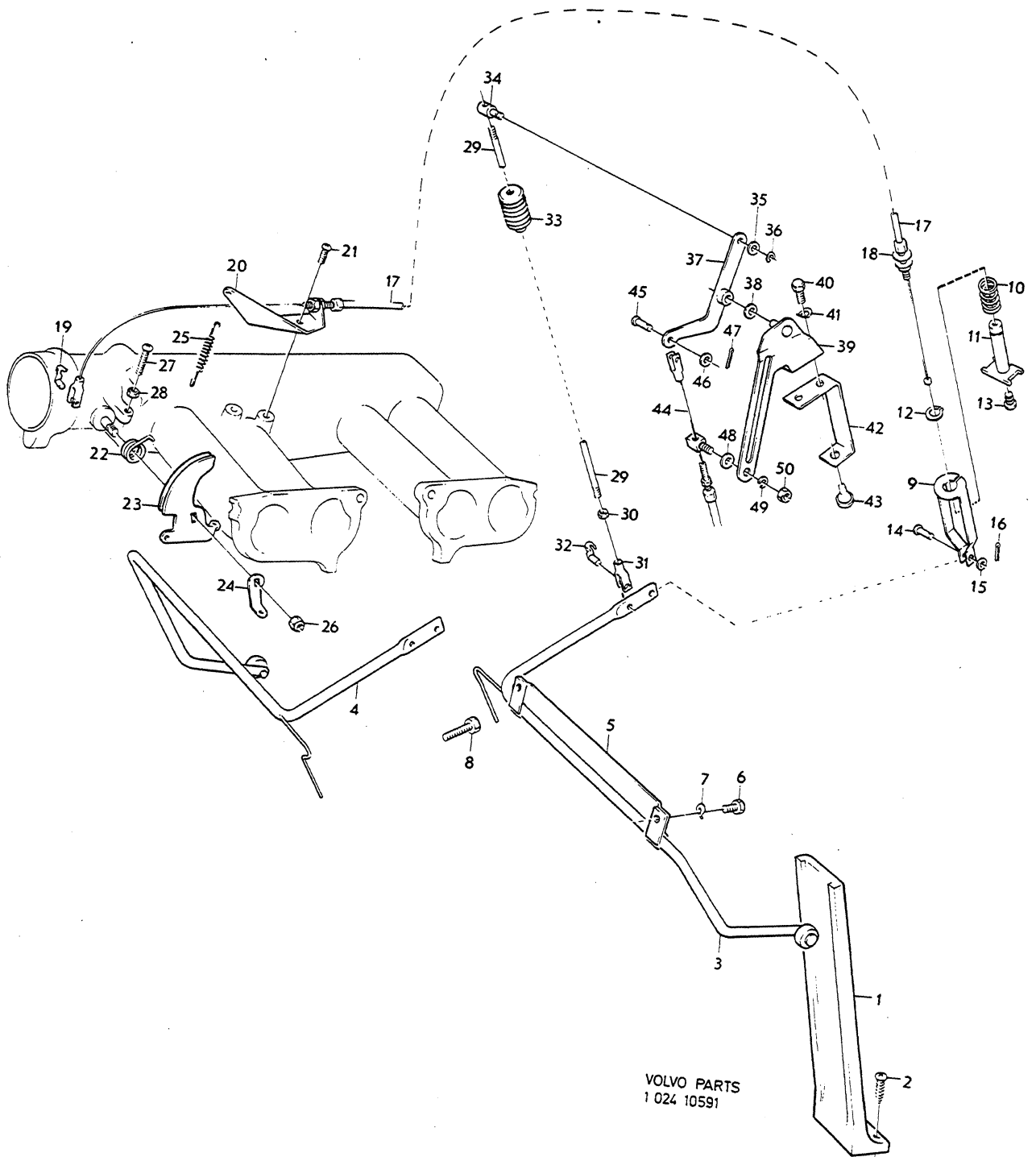
590

600





Sida	Grupp	Gasreglage	Throttle linkage	Illustration Utgåva					
4c	2d	B20E-F	B20E-F	2					
Page	Group	183 CH 3070-	183 CH 3070-	10591 Issue					
Pos. Fig.	Antal/Quantity			Detalj nr Part No	Benämning	Description	Sats Kit	Anmärkning Notes	
1	1	-	-	661996-9	Gaspedal .....	Accelerator pedal .....	3		010
2	2	-	-	955141-7	Skruv .....	Screw .....	0		020
3	1	-	-	682912-1	Åxel .....	Shaft .....	4	VST	030
4	1	-	-	682913-9	Åxel .....	Shaft .....	4	HST	040
5	1	-	-	662734-3	Lager .....	Bearing .....	4		050
6	2	-	-	955512-9	Skruv .....	Screw .....	0		060
7	2	-	-	941906-0	Fjädrande bricka .....	Resilient washer .....	0		070
8	1	-	-	663422-4	Ställskruv .....	Set screw .....			080
9	1	-	-	1212148-9	Fjäderhållare .....	Spring retainer .....			090
10	1	-	-	1212151-3	Fjäder .....	Spring .....			100
11	1	-	-	1212149-7	Dragstång .....	Pull rod .....			110
12	1	-	-	940217-3	Spärring .....	Circlip .....	0		120
13	1	-	-	677337-8	Plugg .....	Plug .....			130
14	1	-	-	952704-5	Saxpinnebult .....	Clevis pin .....	0		140
15	1	-	-	940090-4	Bricka .....	Washer .....		TID UTF.	150
16	1	-	-	907824-7	Saxpinne .....	Split pin .....			160
17	1	-	-	1212152-1	Gasvajer .....	Throttle wire .....	2		170
18	1	-	-	687419-2	Bricka .....	Washer .....	3		180
19	1	-	-	677218-0	Bult .....	Bolt .....	2		190
20	1	-	-	460422-9	Konsol .....	Bracket .....	3		200
21	3	-	-	950044-8	Skruv .....	Screw .....	0		210
22	1	-	-	460560-6	Fjäder .....	Spring .....	3		220
23	1	-	-	682915-4	Exenterhjul .....	Excentric cam .....	3		230
24	1	-	-	460421-1	Hävarm .....	Lever .....	3		240
25	1	-	-	418963-5	Fjäder .....	Spring .....	3		250
26	1	-	-	950363-2	Mutter .....	Nut .....	0		260
27	1	-	-	950023-2	Skruv .....	Screw .....	0		270
28	1	-	-	940092-0	Mutter .....	Nut .....	0		280
29	1	-	-	942412-8	Reglerstång .....	Control rod .....	3	BW35	290
30	1	-	-	955780-2	Mutter .....	Nut .....	0	BW35	300
31	1	-	-	943884-7	Gaffel .....	Yoke .....	3	BW35	310
32	1	-	-	677218-0	Bult .....	Bolt .....	2	BW35	320
33	1	-	-	1212147-1	Bälg .....	Bellows .....	2	BW35	330
34	1	-	-	685340-2	Åxel .....	Shaft .....	2	BW35	340
35	1	-	-	943865-6	Bricka .....	Washer .....	0	BW35	350
36	1	-	-	940213-2	Spärryttare .....	Circlip .....	0	BW35	360
37	1	-	-	685344-4	Hävarm .....	Lever .....	3	BW35	370
38	1	-	-	943865-6	Bricka .....	Washer .....	0	BW35	380
39	1	-	-	685345-1	Konsol .....	Bracket .....	3	BW35	390
40	2	-	-	940100-1	Skruv .....	Screw .....	0	BW35	400
41	2	-	-	941906-0	Fjädrande bricka .....	Resilient washer .....	0	BW35	410
42	1	-	-	684776-8	Konsol .....	Bracket .....	3	BW35	420
43	1	-	-	306288-2	Plugg .....	Plug .....		BW35	430
44	1	-	-		Reglagevajer .....	Cable .....		BW35. SE GRUPP 4	440
45	1	-	-	913094-9	Saxpinnebult .....	Clevis pin .....	0	BW35	450
46	1	-	-	955891-7	Bricka .....	Washer .....	0	BW35	460
47	1	-	-	907819-7	Saxpinne .....	Split pin .....	0	BW35	470
48	1	-	-	955894-1	Bricka .....	Washer .....	0	BW35	480
49	1	-	-	955921-2	Fjäderbricka .....	Spring washer .....	0	BW35	490
50	1	-	-	955846-1	Mutter .....	Nut .....	0	BW35	500



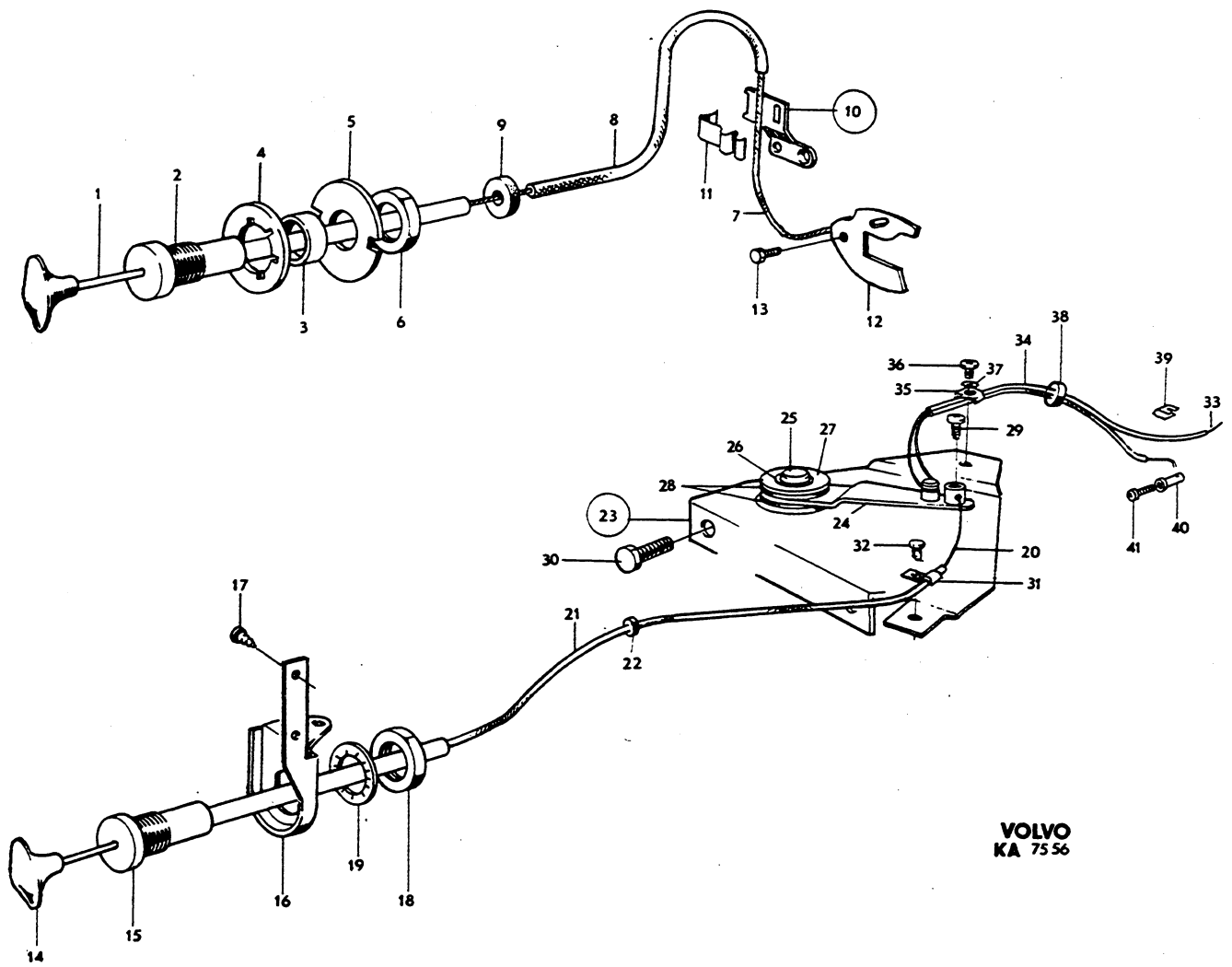
VOLVO PARTS  
 1 024 10591



Sida	Grupp	Chokereglage	Choke linkage	Illustration	Utgåva
6	2d	B20B	B20B		2
Page	Group			7556 Issue	

Pos. Fig.	Antal/Quantity				Detalj nr Part No	Benämning	Description	Sats Kit	Anmärkning Notes	004
	VST	HST								
1	1	-	-	-	673436-2	Dragstång .....	Pull rod .....	3		010
2	1	-	-	-	661439-0	Hylsa .....	Sleeve .....			020
3	1	-	-	-	673433-9	Distansring .....	Spacer .....			030
4	1	-	-	-	673435-4	Bricka .....	Washer .....			040
5	1	-	-	-	673434-7	Bricka .....	Washer .....			050
6	1	-	-	-	940154-8	Mutter .....	Nut .....	0		060
7	1420	-	-	-	55192-9	Tråd .....	Cable .....	2		070
8	1310	-	-	-	88783-6	Spiral .....	Sheath .....	2		080
9	1	-	-	-		Gummibussning .....	Rubber bushing .....		SE GRUPP 3	090
10	1	-	-	-		Hållare .....	Retainer .....		SE GRUPP 2C	100
11	1	-	-	-		•Låsfjäder .....	•Lock spring .....		SE GRUPP 2C	110
12	1	-	-	-		Hävarm .....	Lever .....		SE GRUPP 2C	120
13	1	-	-	-		Skruv .....	Screw .....		SE GRUPP 2C	130
14	-	1	-	-	673436-2	Dragstång .....	Pull rod .....	3		140
15	-	1	-	-	661439-0	Hylsa .....	Sleeve .....			150
16	-	1	-	-	667037-6	Konsol .....	Bracket .....			160
17	-	2	-	-	955136-7	Skruv .....	Screw .....	0		170
18	-	1	-	-	940154-8	Mutter .....	Nut .....	0		180
19	-	1	-	-	955951-9	Låsbricka .....	Lock washer .....	0		190
20	-	430	-	-	55192-9	Tråd .....	Cable .....	2		200
21	-	330	-	-	88783-6	Spiral .....	Sheath .....	2		210
22	-	1	-	-	667029-3	Gummibussning .....	Rubber bushing .....	2		220
23	-	1	-	-	667036-8	Fäste .....	Anchorage .....			230
24	-	1	-	-		•Hävarm .....	•Lever .....	8		240
25	-	1	-	-		•Nit .....	•Rivet .....	8		250
26	-	1	-	-	61544-3	•Fjädrande bricka .....	•Resilient washer .....			260
27	-	1	-	-		•Bricka .....	•Washer .....	8		270
28	-	2	-	-	666925-3	•Fiberbricka .....	•Fibre washer .....			280
29	-	1	-	-	950003-4	Skruv .....	Screw .....	0		290
30	-	2	-	-	190953-0	Skruv .....	Screw .....	0		300
31	-	1	-	-	191138-7	Klammer .....	Clamp .....	0		310
32	-	1	-	-	950018-2	Skruv .....	Screw .....	0		320
33	-	1100	-	-	55192-9	Tråd .....	Cable .....	2		330
34	-	610	-	-	88783-6	Spiral, främre .....	Sheath, forward .....	2		340
	-	290	-	-	88783-6	Spiral, bakre .....	Sheath, rear .....	2		350
35	-	1	-	-	942054-8	Klammer .....	Clamp .....	0		360
36	-	1	-	-	950021-6	Skruv .....	Screw .....	0		370
37	-	1	-	-	94641-8	Låsbricka .....	Lock washer .....	2		380
38	-	1	-	-	664425-6	Gummiring .....	Rubber ring .....	2		390
39	-	2	-	-	419452-8	Clip .....	Clip .....	2		400
40	-	2	-	-	418561-7	Trådållare .....	Cable retainer .....	2		410
41	-	2	-	-	950003-4	Skruv .....	Screw .....	0		420





**VOLVO**  
**KA 75 56**

