



# SERVICE BULLETIN

SUBJECT: ENGINE TYPES  B18, B20, B30	PRODUCT CARS
	GROUP 20
DATE: SEPT. 1973	NO. 6

REPLACES EARLIER BULLETIN GROUP 20, NO. 6 DATED FEB. 1973.

The various IDENTIFYING ENGINE TYPES applicable to VOLVO MODELS are LISTED BELOW. The ENGINE TYPE NUMBERS (six) are LOCATED on the upper SIDE of the ENGINE BLOCK, adjacent to the ENGINE OIL DIP STICK.

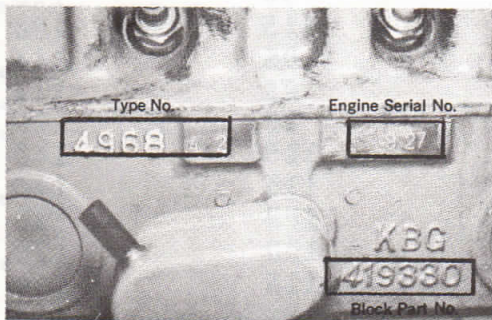
<u>TYPE NO.</u>	<u>ENGINE TYPE</u>	<u>OUTPUT B.H.P. (SAE)</u>	<u>VEHICLE TYPE</u>
496800	B 18 B	100	180
496802	B 18 D	90	544, 120
496812	B 18 B	108	180
496815	B 18 D	90	120, (BW 35)
496816	B 18 D	90	544, 120
496817	B 18 D	108	180
496818	B 18 D	90	120, (BW 35)
496819	B 18 B	115	180
496820	B 18 D	95	544, 120
496821	B 18 D	95	544, 120
496822	B 18 D	95	120, (BW 35)
496836	B 18 B	115	140
496838	B 18 B	115	140, (BW 35)
496840	B 18 D	100	120
496841	B 18 D	100	120, (BW 35)
496842	B 18 B	115	180
496860	B 18 B	115	120 GT
496864	B 18 B	115	180
496865	B 18 B	115	140
496866	B 18 B	115	120 GT
496867	B 18 B	115	140 (BW35)
496868	B 18 B	115	120
496869	B 18 B	115	120, (BW 35)
496912	B 20 B	118	142, 144, 145
496913	B 20 B	118	142, 144, 145, (BW 35)
496922	B 20 B	118	180
496929	B 20 B	118	142, 144, 145
496930	B 20 B	118	142, 144, 145 (BW 35)
496940	B 20 E	130	180 E
496941	B 20 E	130	1800 E (BW 35)
496943	B 20 E	130	142E
496945	B 20 E	130	142E, (BW 35)

<u>TYPE NO.</u>	<u>ENGINE TYPE</u>	<u>OUTPUT B.H.P.</u> <u>(SAE)</u>	<u>VEHICLE TYPE</u>
498282	B 20 F	125	180
498283	B 20 F	125	180 (BW 35)
498284	B 20 F	125	142,144,145
498285	B 20 F	125	142,144,145 (BW 35)
498048	B 20 F	109	142,144,145
498049	B 20 F	109	142,144,145 (BW 35)
496953	B 30 A	145	160
496954	B 30 A	145	160 (BW 35)
498100	B 30 F	160	160
498101	B 30 F	160	160 (BW 35)
498164	B 30 F	138	160
498165	B 30 F	138	160 (BW 35)

## ENGINE IDENTIFICATION

### LOCATION

B18, B 20



B 30

